

# POPCLUB

Exclusively for POPULAR Cardholders  
05 Aug - 16 Sep 2011

MICA (P) 073/09/2010

## Aaron Kwok 郭富城 的黄金之年

电影《全球热恋》  
礼包大赠送

Gadget  
Addiction  
Reality  
or Myth?

Great  
Sights  
to behold in  
Jeju and  
Hokkaido

Win movie  
premiums,  
concert and  
musical tickets  
worth over  
**\$6,000!**

POPULAR  
Connections  
& The Dotted Lines  
Members' Exclusive Instant Rewards

Must have!  
Education Guide/  
Stationery Solutions  
Supplement



2 000000 355832  
\$0.50\* T&C apply.

# Tried & Tasted

Hearty Meals On The Go: Sussing out the most succulent gourmet sandwiches and soups around town.

By Alyssa Ng

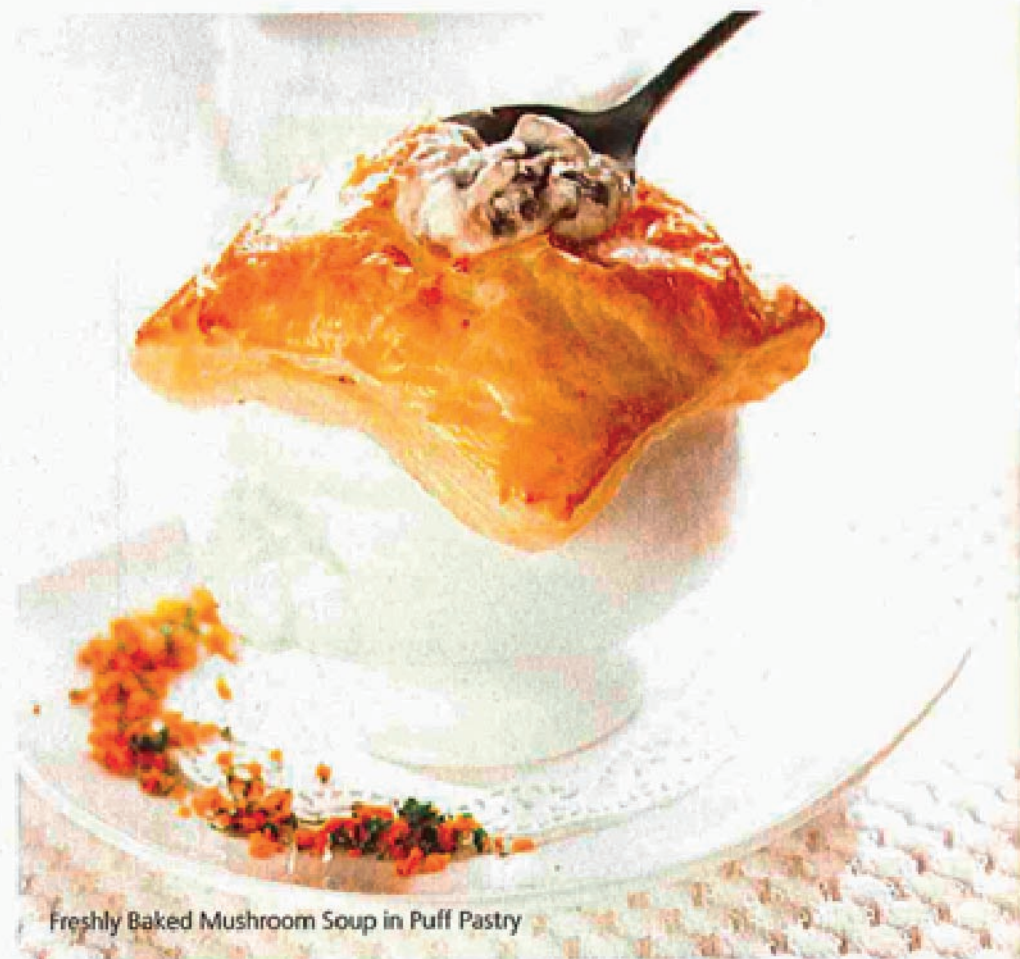
## Hotel Re!

175A Chin Swee Road

To those with artistic temperament, Hotel Re! is the latest hotspot imbued with retro-turned-hippy chic vibes. Situated at the base of Pearl's Hill, it evokes a modern allure with its bold popsicle palette coupled with psychedelic furnishings. With a new menu out in July, we lapped up the chef's recommendations at Re!Fill, and went gaga over the Baguette Club Sandwich (chef's recommendation). Beneath the golden toasted crust, there are four layers of fillings: cheese, tomatoes, lettuce and ham, and the juicy savoury taste is simply to die for! The sheer sight of the tangy Tuna Croissant also had us going ooh-la-la! The slit pocket of the warm toasty croissant is packed with generous fillings – chunks of tuna with celery, gherkin, tomatoes and onions tossed in guacamole dressing. Fresh and moist, it sets our taste-buds into overdrive.



Baguette Club Sandwich



Freshly Baked Mushroom Soup in Puff Pastry



Tuna Croissant



Mini Burger Sampler & Clam Chowder Soup

## Canopy Garden Dining & Bar

Bishan Park 2, 1382 Ang Mo Kio Ave 1

"Dine against the backdrop of nature" – the tagline says it all. Canopy Dining & Bar, the newest addition by Asmara Lifestyle Group, has a breathtaking garden setting that is a world away from the hustle of life. The oasis-like dining concept marries passion for nature with Australian-style café food. The main highlight is the Burgwich (sandwich in the style of a burger) and the Mini Burger Sampler is a definite HIT with the ladies and children! Oozing with cuteness, the top-half of the three itty bitsy mantou (buns) are toasted to a crisp, golden brown with three different fillings: cod fish, wagyu beef and chicken satay. A sleek touch of Asian fusion, it is complemented by chunky fries and garden greens. Do try the Clam Chowder Soup that possesses a rich creamy taste. Surrounded by the verdant greenery, you can dine and soak in the tranquil bliss at the same time!